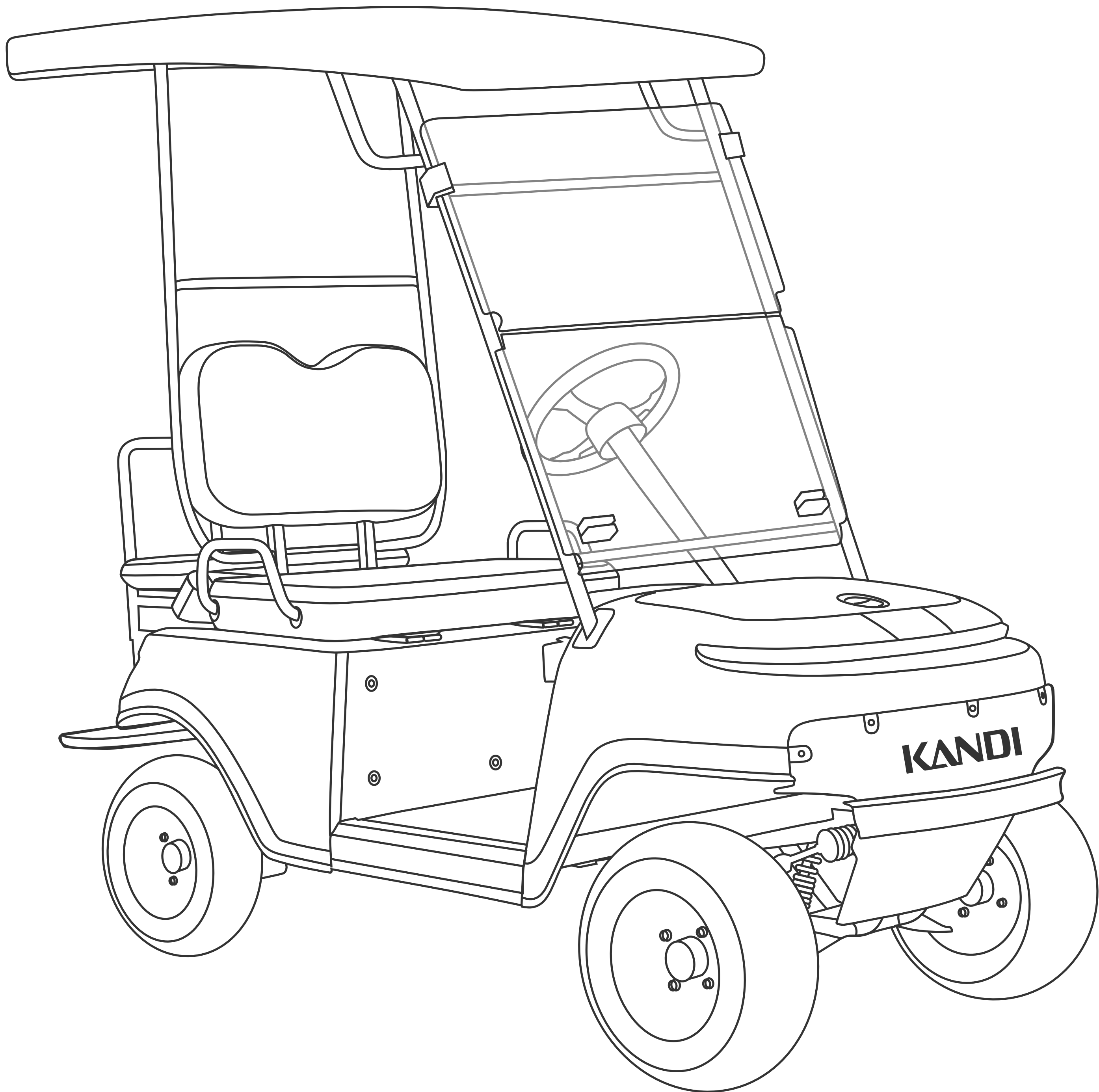


**KANDI**

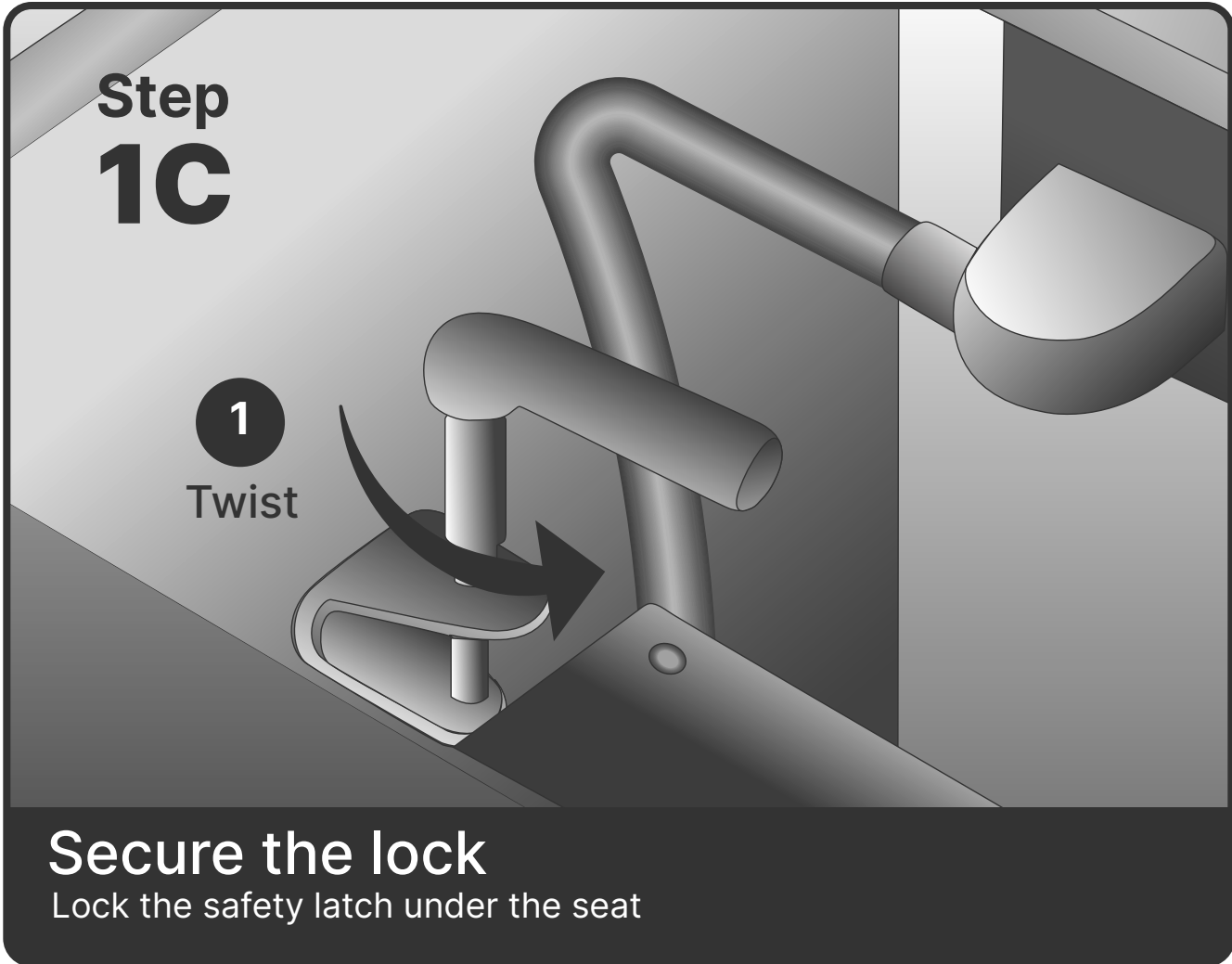
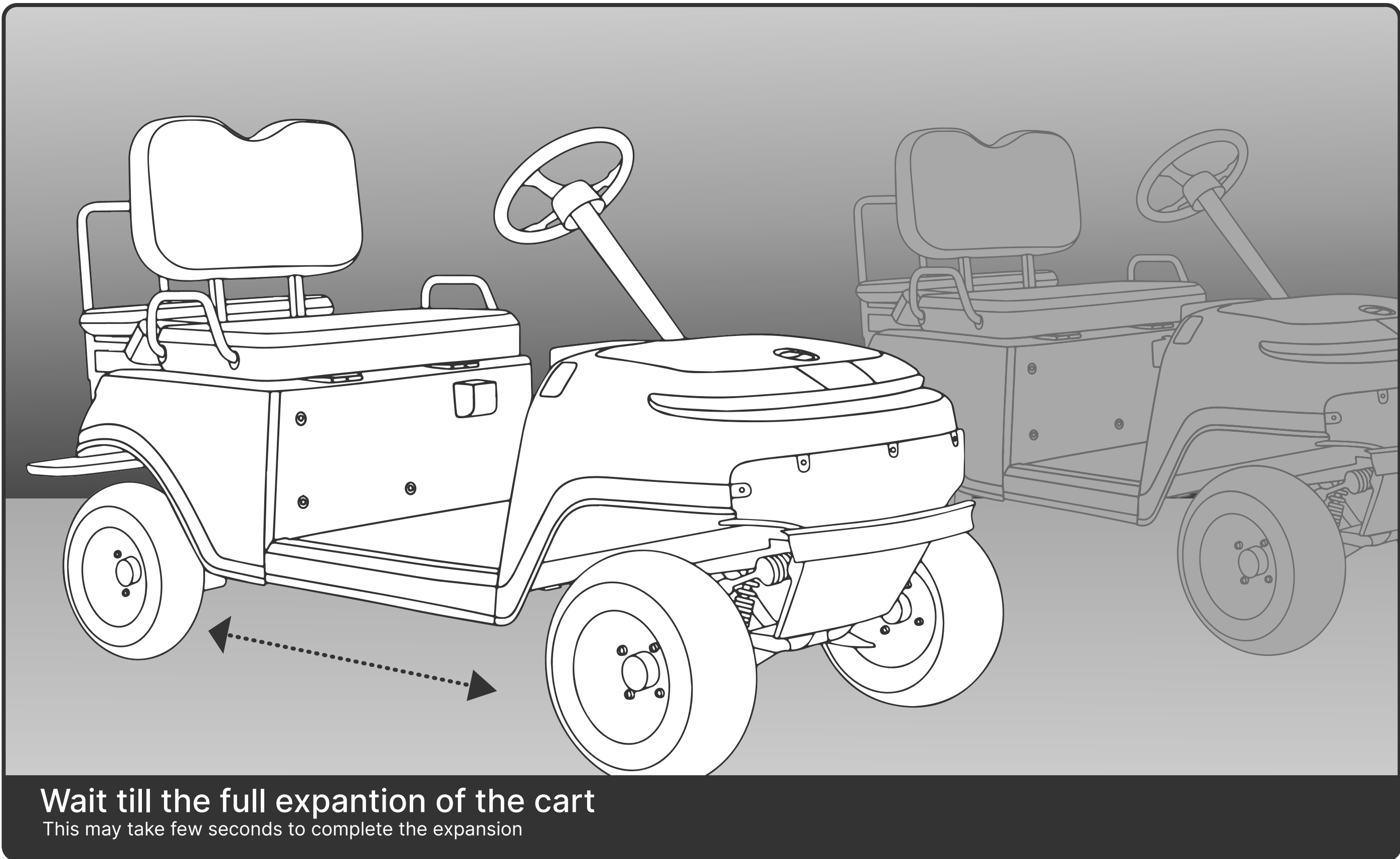
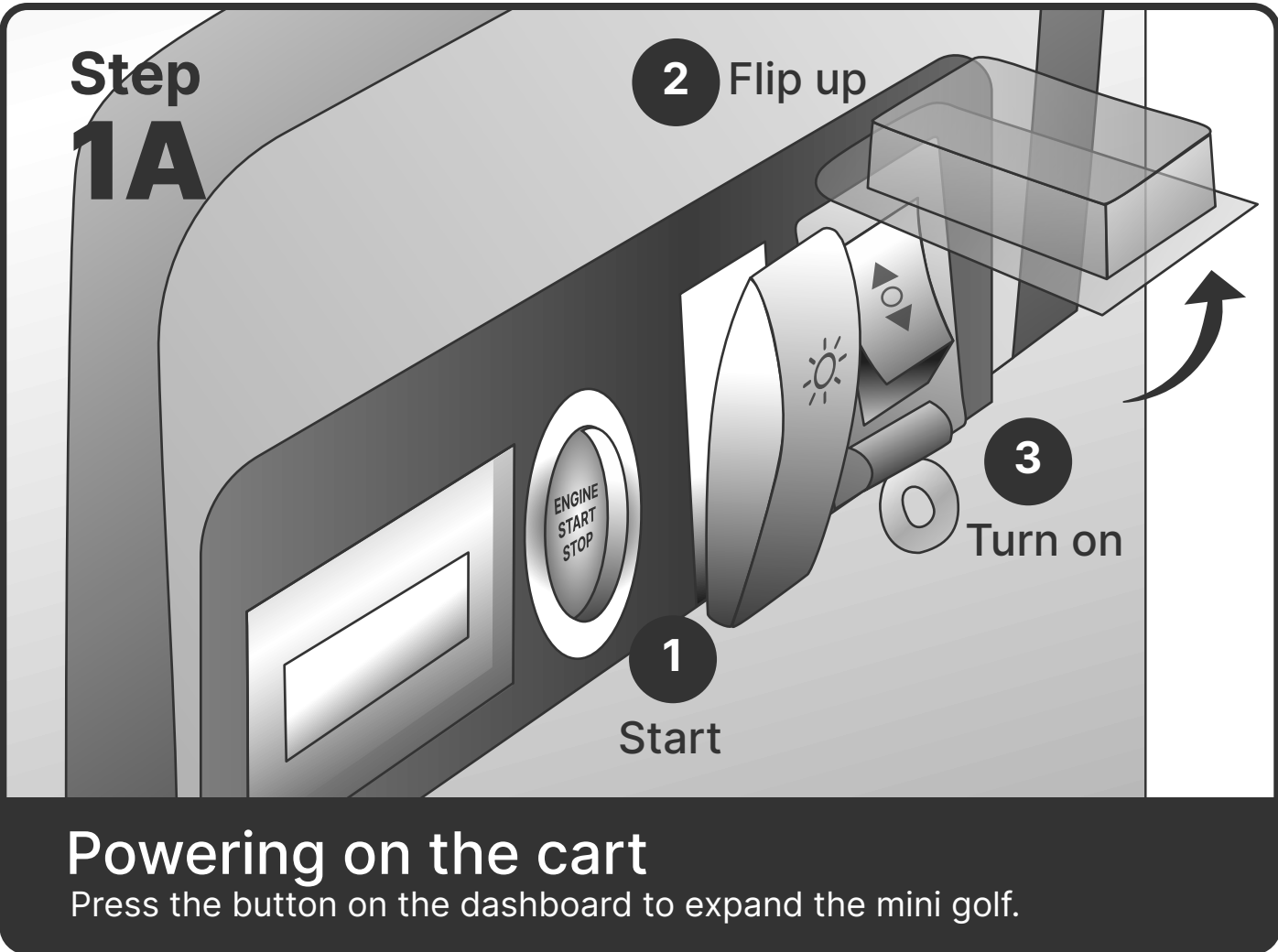
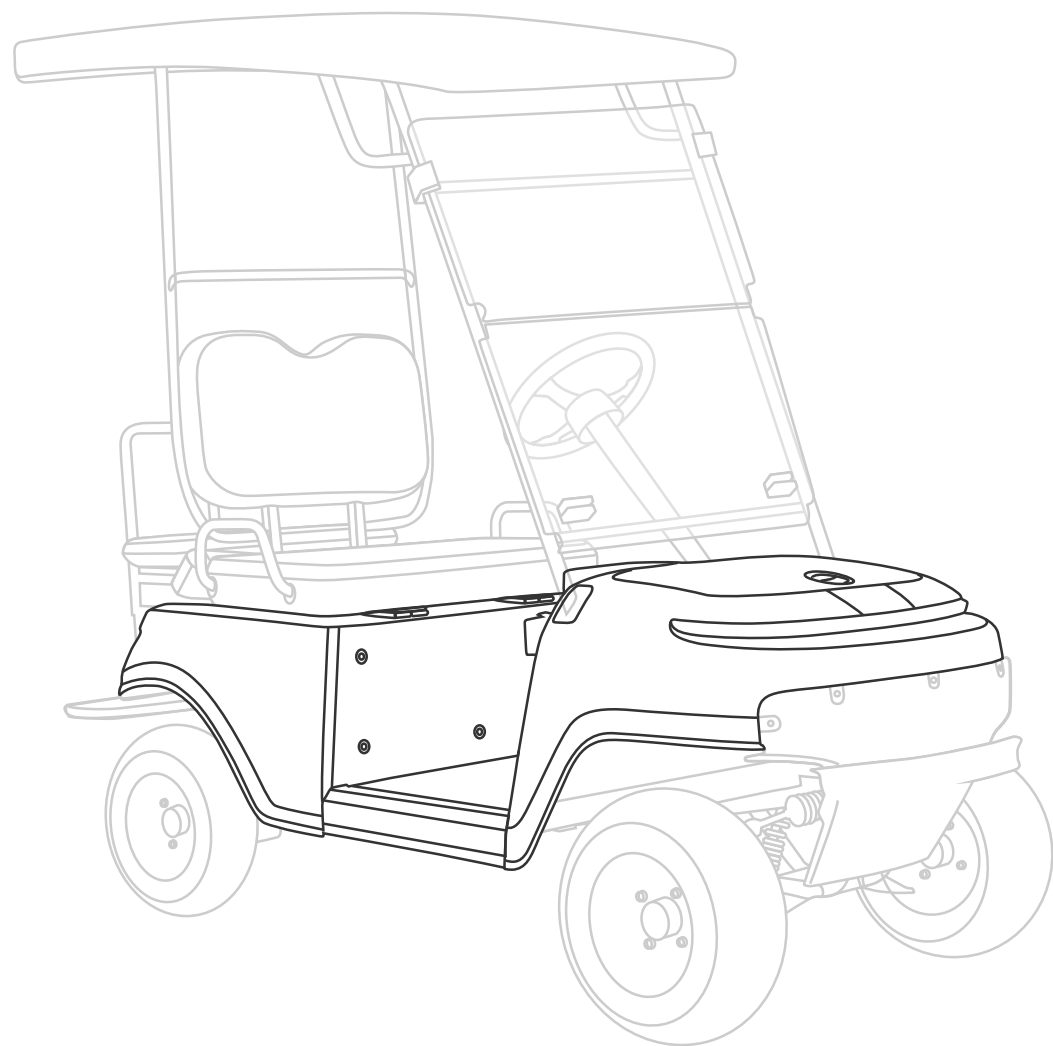
Mini Golf Cart

# Roof and Windshield Installation



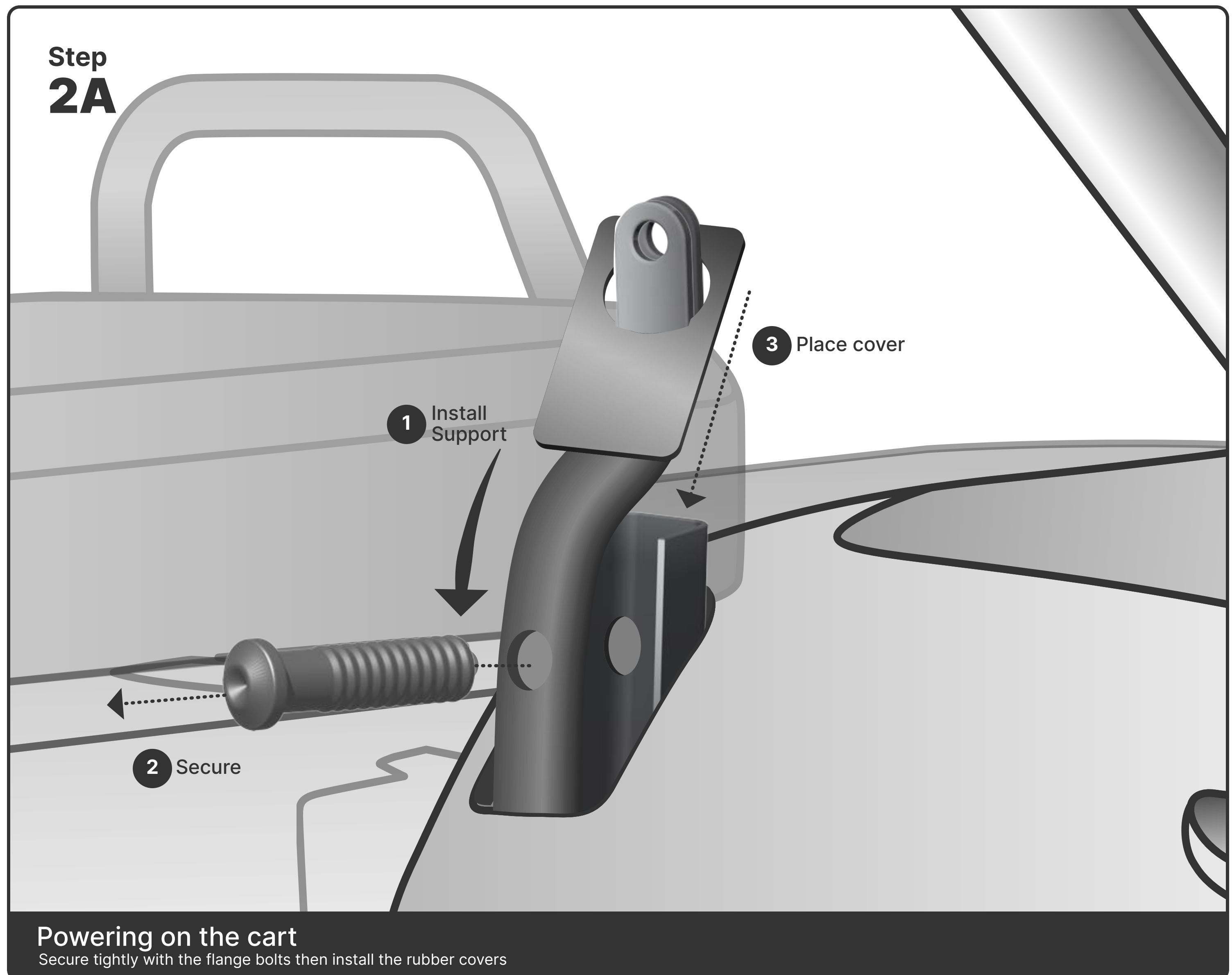
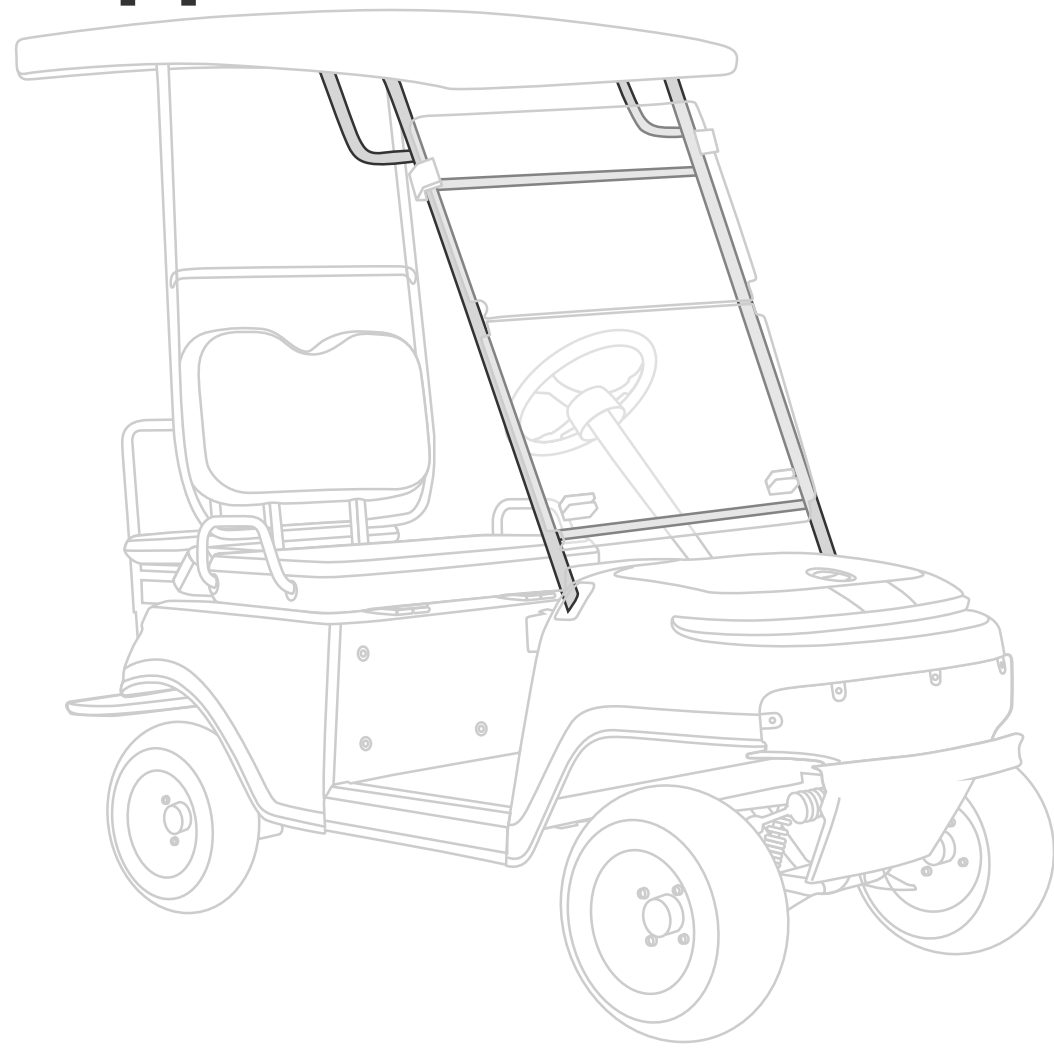
# Assembly Instruction

## 1.Expand Cart

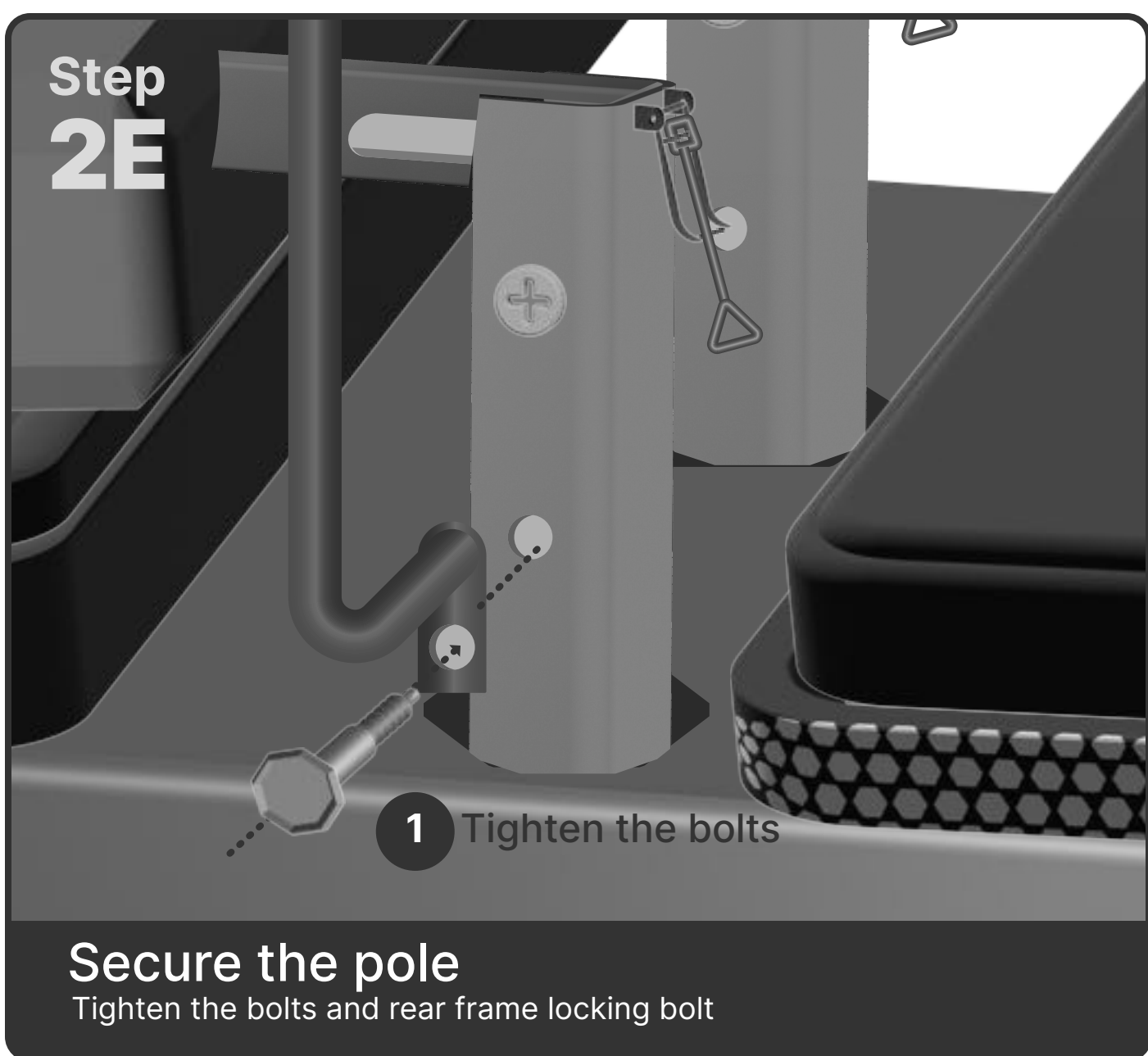
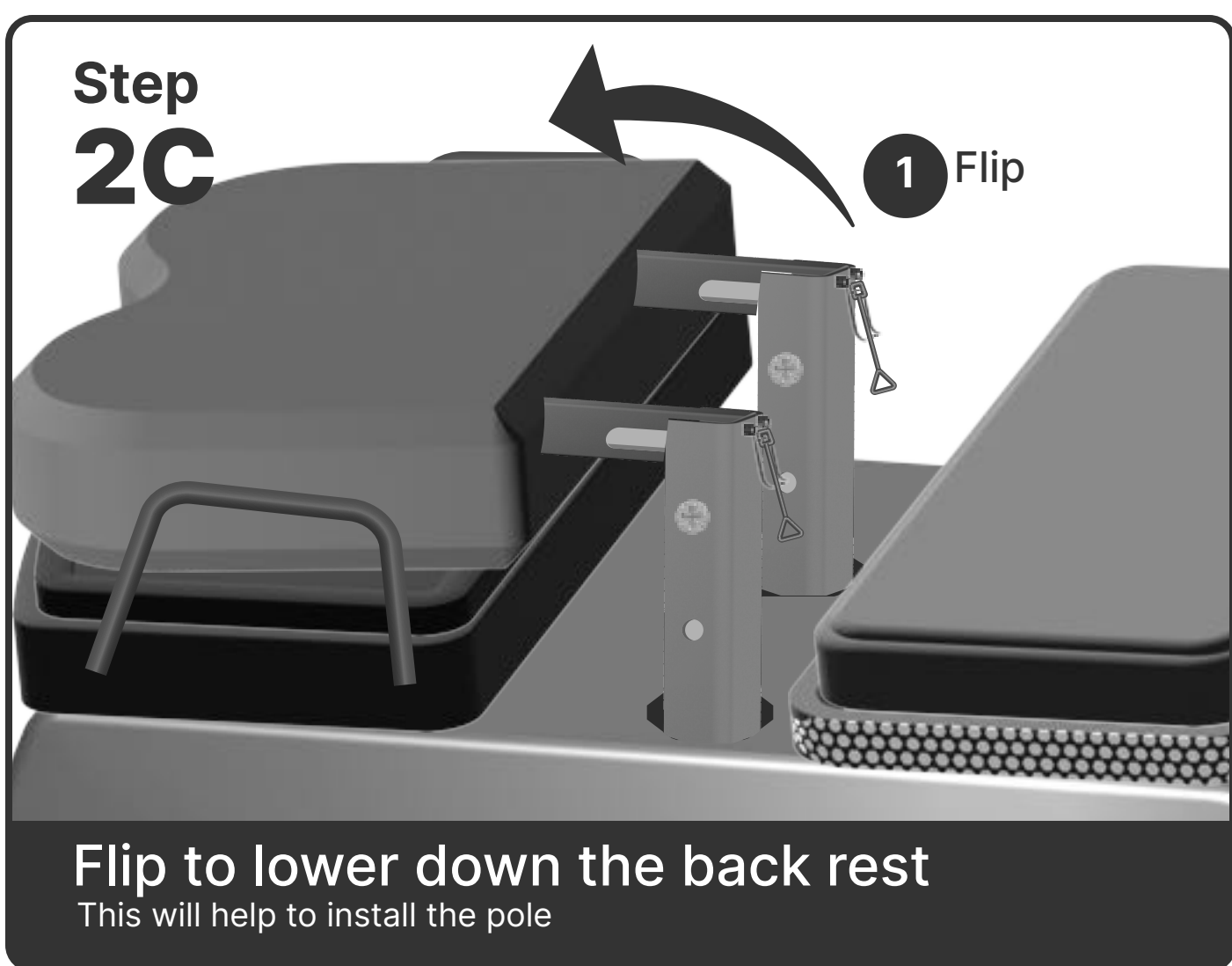
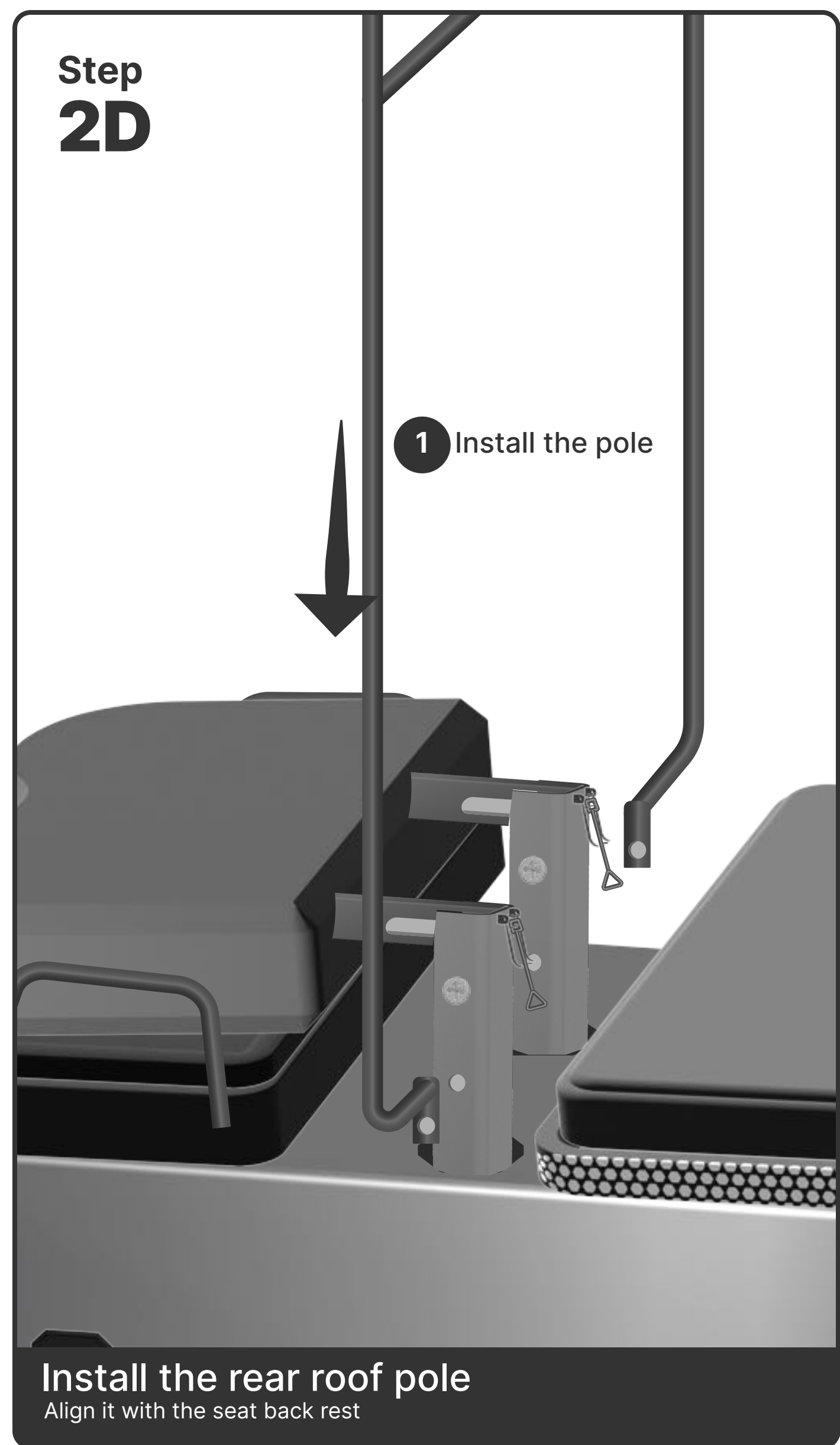
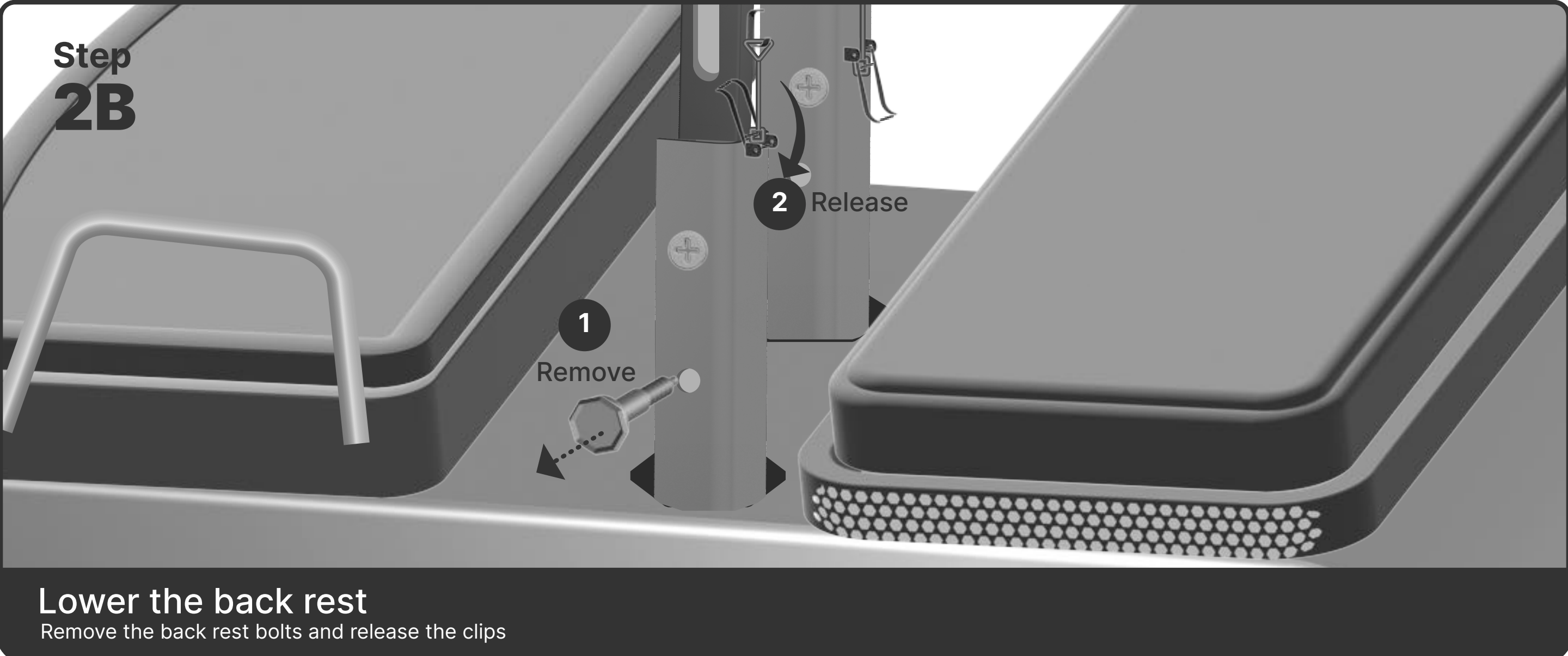


## Assembly Instruction

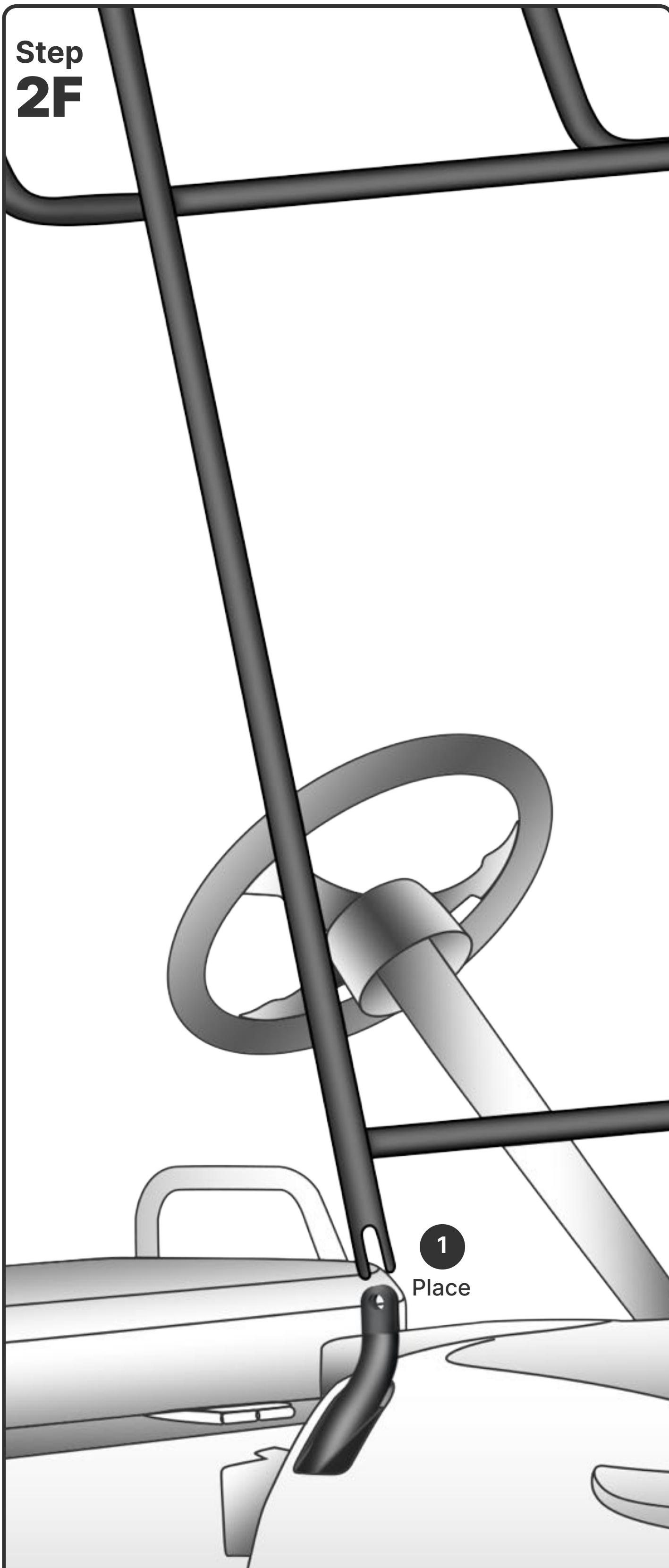
### 2. Front Support





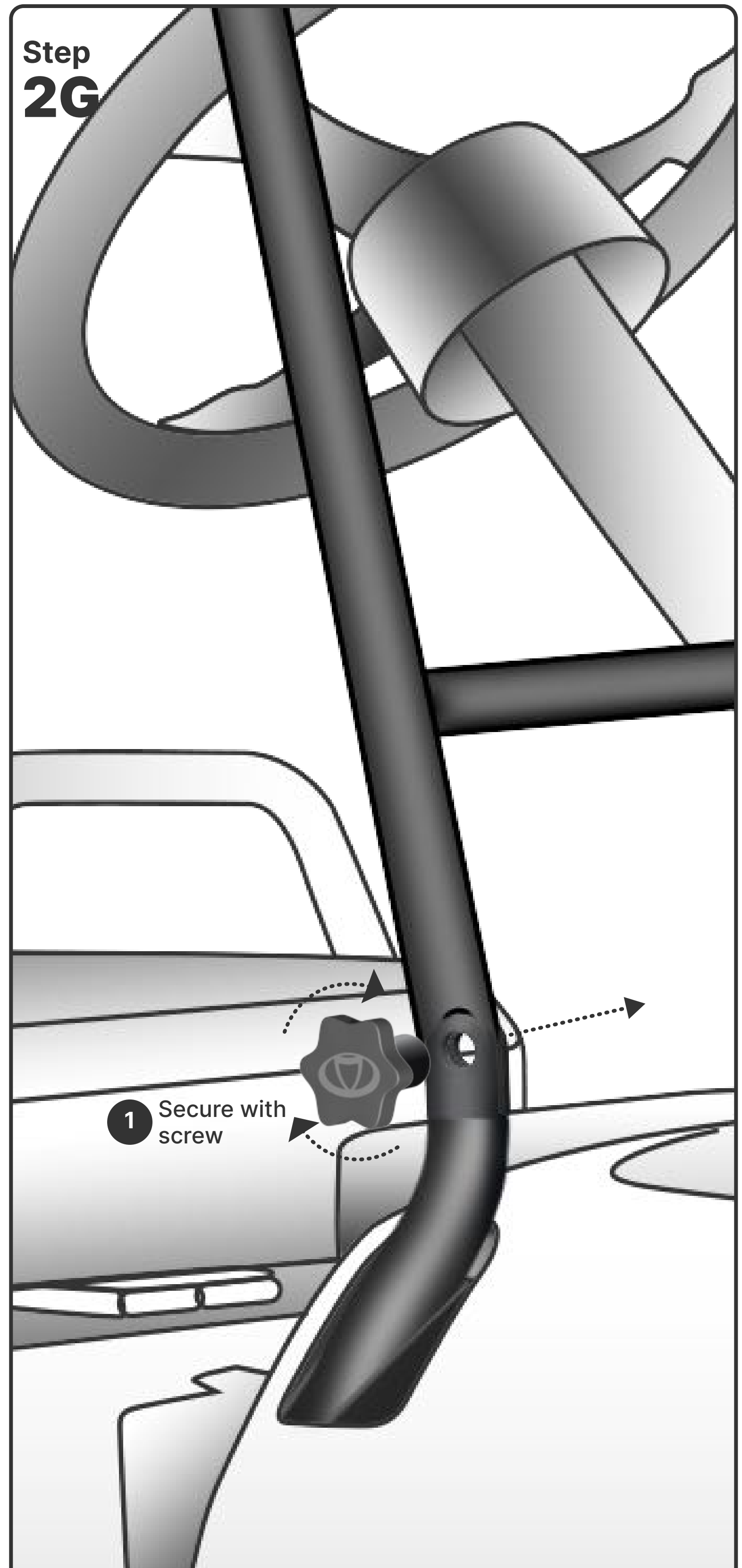






**Install the frame**

Insert the windshield frame into the left and right support poles

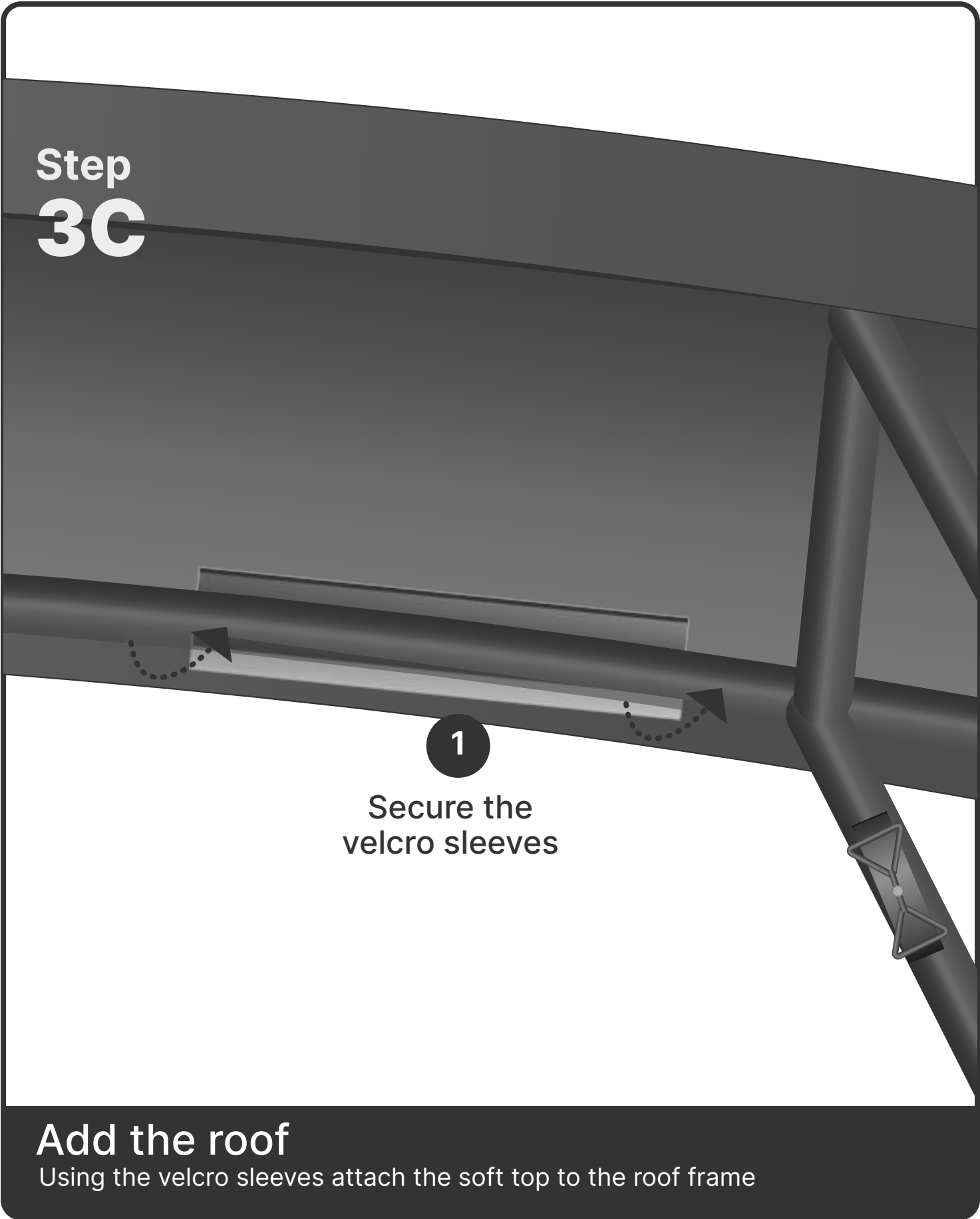
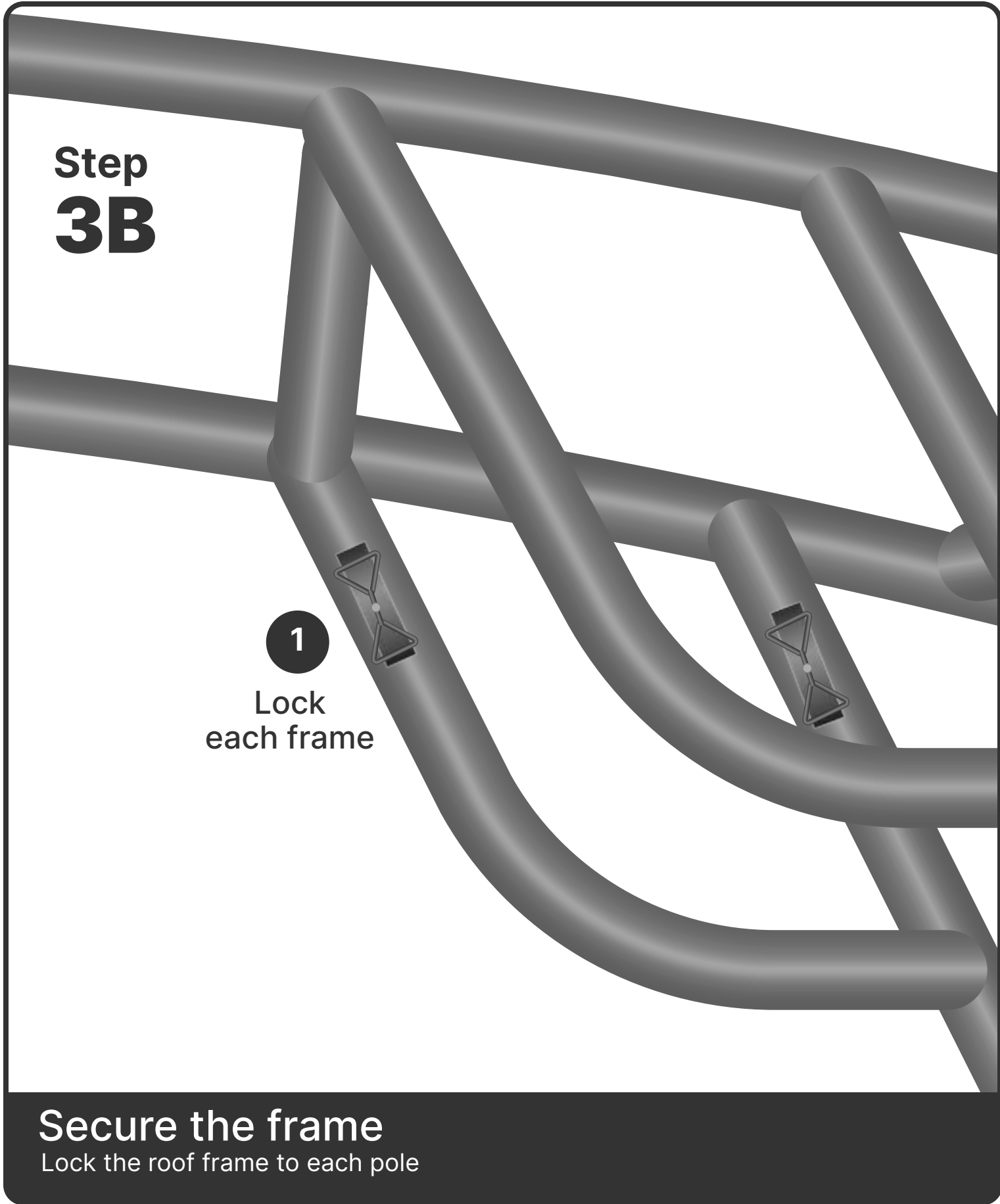
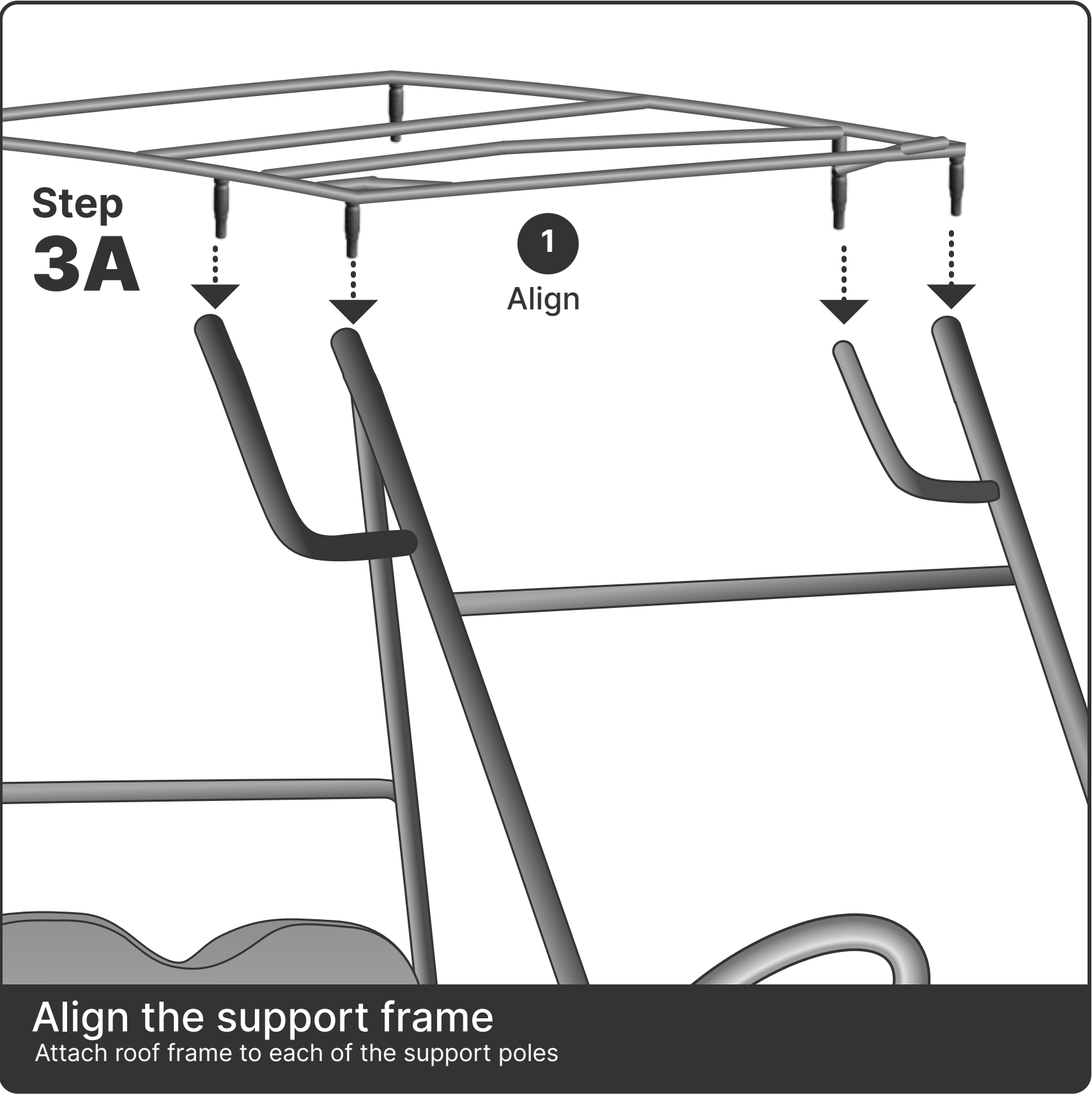
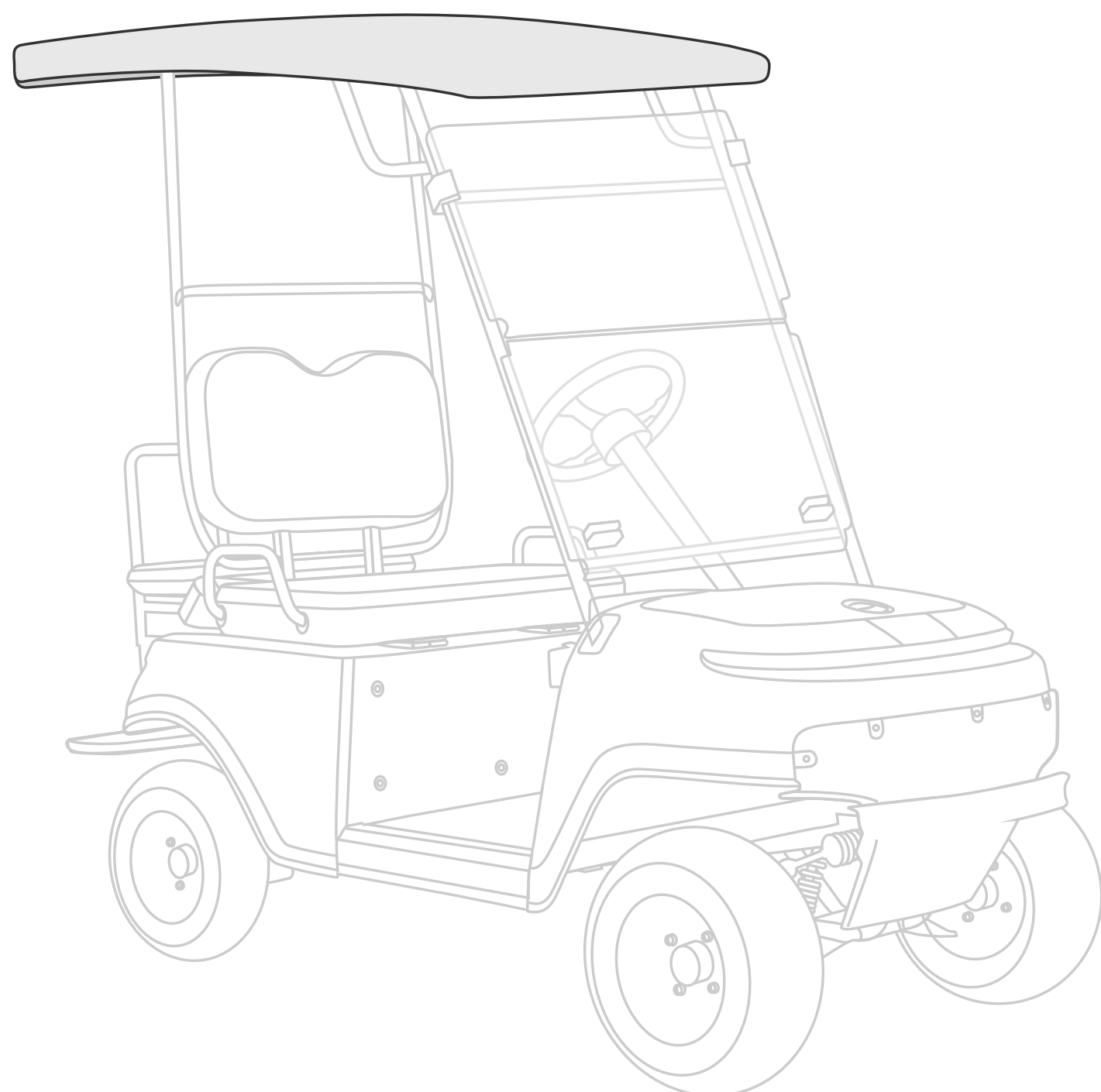


**Secure the frame**

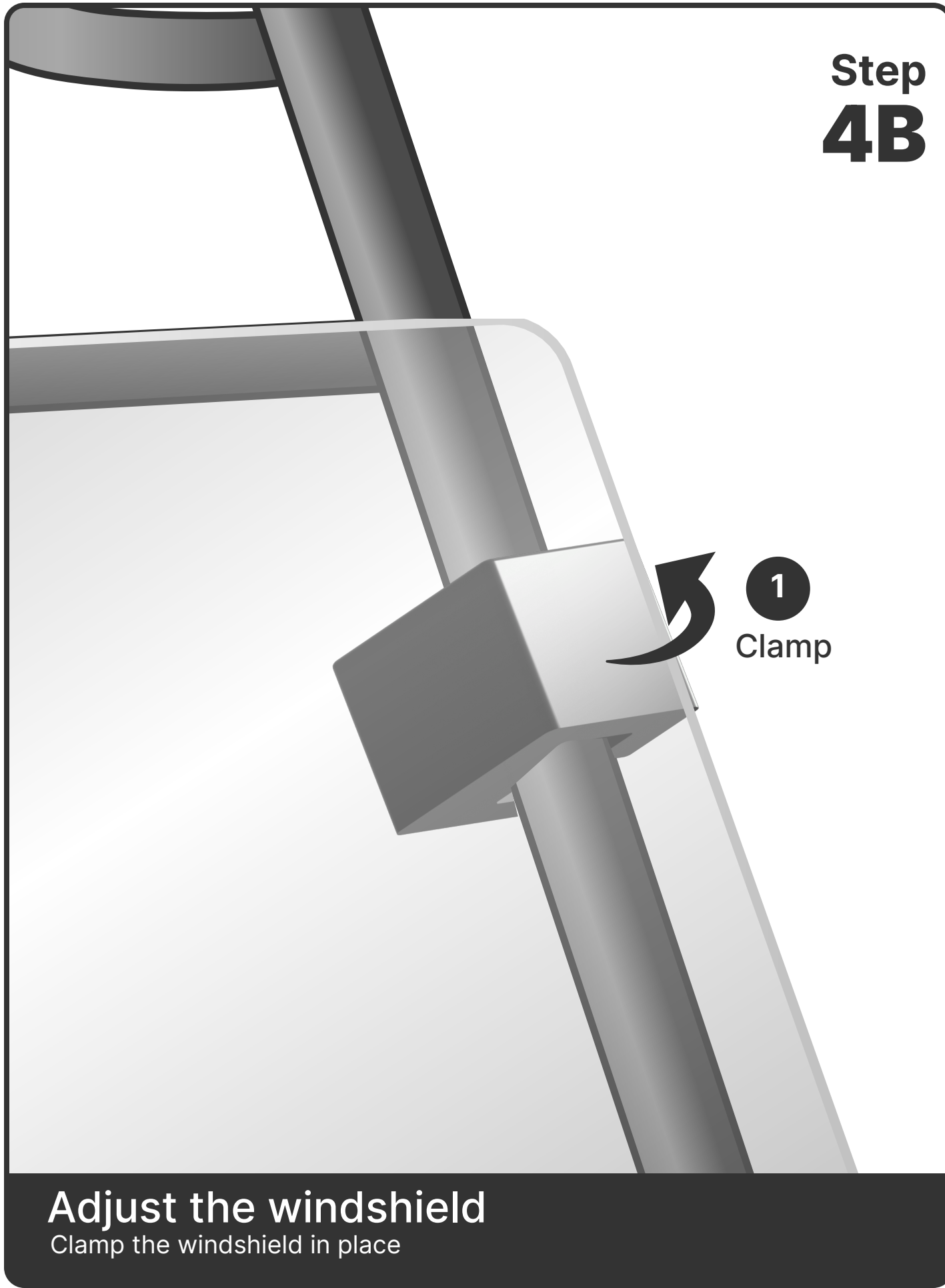
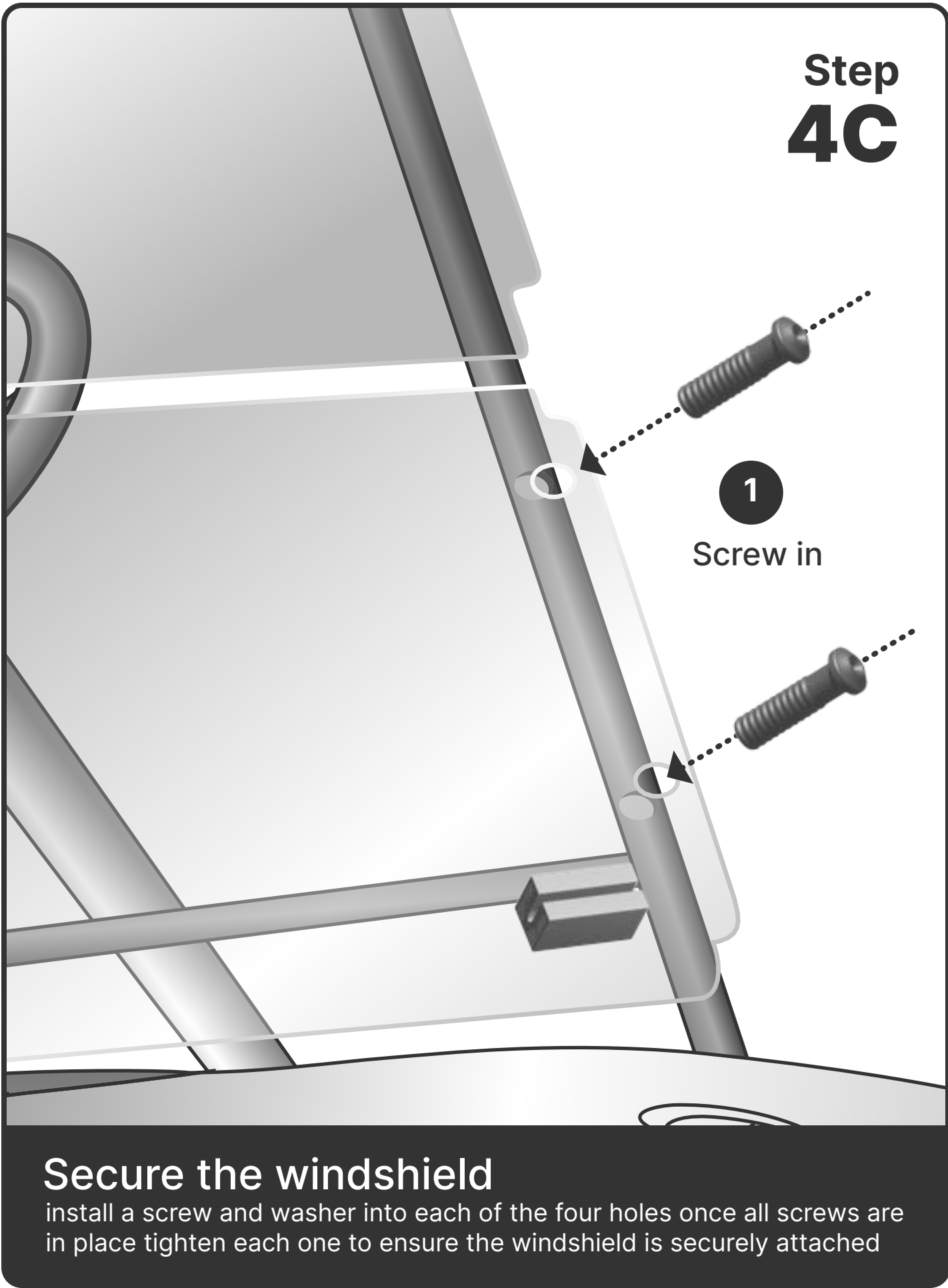
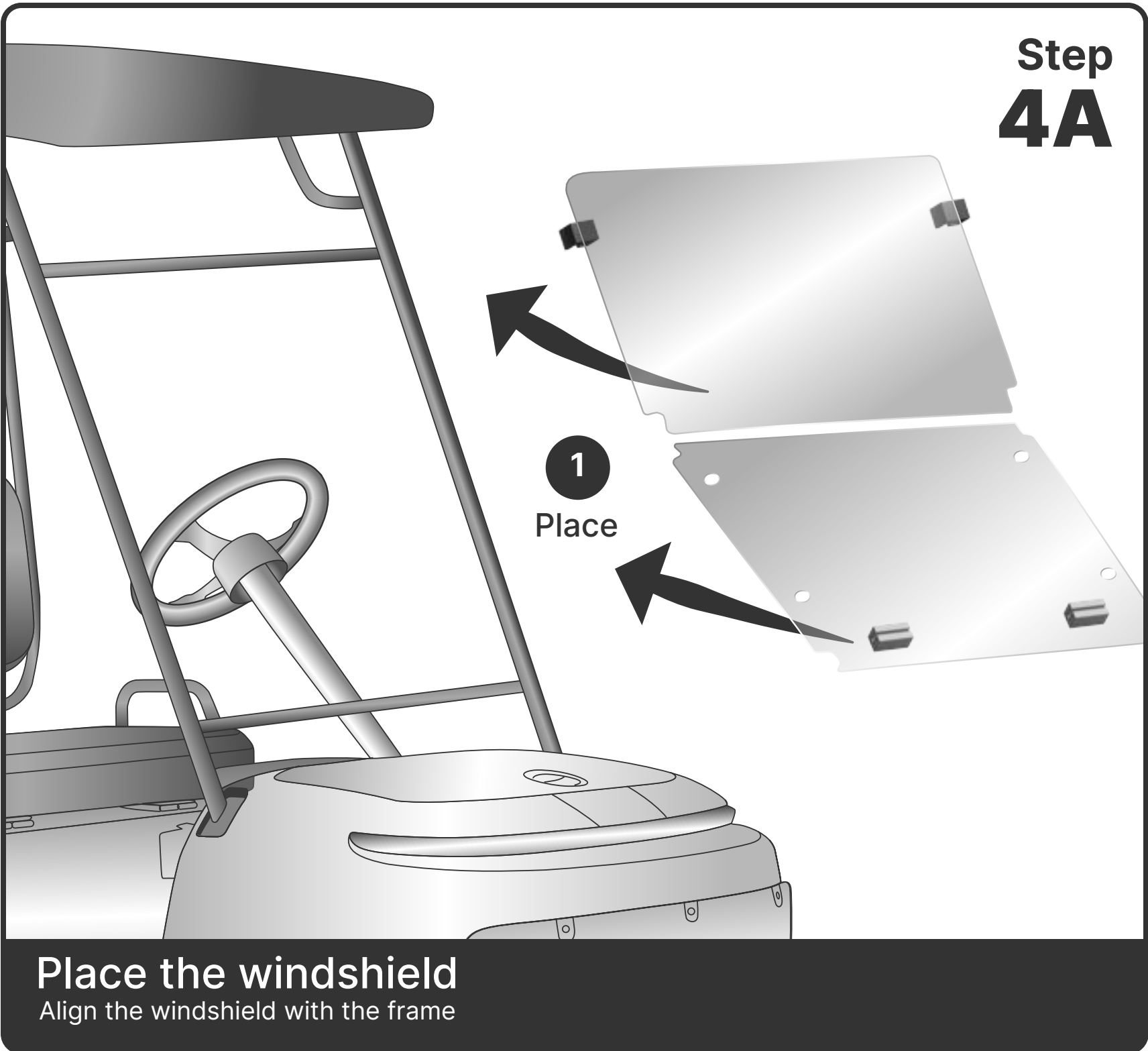
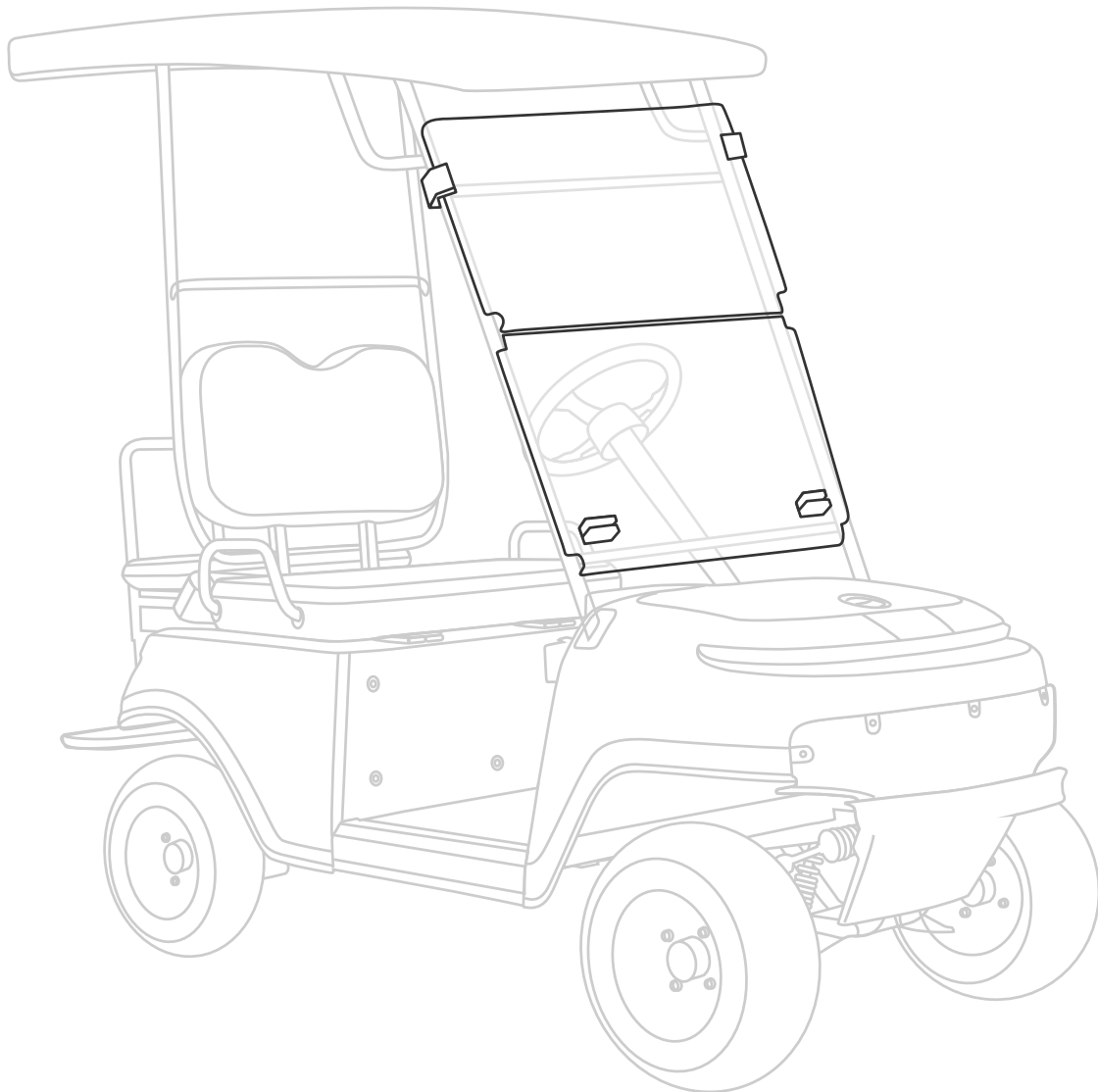
Lock it in place with the windshield screws

Assembly Instruction

3. Roof



**Assembly Instruction**  
**4.Windshield**



**Warning**  
Do not collapse the cart with the roof installed this will damage the roof frame